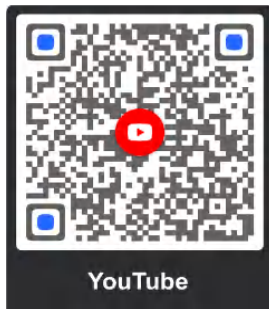


FaceBook



YouTube

山东久邦重工集团有限公司
Shandong Jiubang Heavy Industry Group Co., Ltd

总公司地址:山东省济宁市嘉祥县汇祥路与嘉城路交叉路口北 88 米路西
Address: 88 meters north of the intersection of Huixiang Road and Jiacheng Road, Jiaxiang County,
Jining City, Shandong Province, west of the road

www.jobanggroup.com

电话(Tel):86 153-1818-4545

服务电话(Service tel):400-629-6166

样本仅供参考 公司保留随技术改进而修改参数的权利

ALL SPECIFICATIONS AIRSUBJECT TO TECHNICAL MODIFICATIONS WITHOUT NOTICE

伸缩臂叉装机

Telescopic arm forklift

伸缩臂叉车是久邦在吸收引进国外伸缩臂叉车的先进设计及制造技术的同时，经广泛市场及技术调研而自主开发设计的一种新型伸缩臂叉车。该机型结构紧凑、操纵灵活、举升灵敏、自动调平，集稳定性与高功效于一身，适合于多种物料搬运环境。同类型产品荣获国家级新产品称号和机械工业科学技术进步奖，连续多年引领中国伸缩臂叉车行业出口和国内高端市场。

The telescopic boom forklift is a new type of telescopic boom forklift independently developed and designed by Jiubang, while absorbing advanced design and manufacturing technology from foreign countries and conducting extensive market and technical research. This model has a compact structure, flexible operation, sensitive lifting, and automatic leveling, combining stability and high efficiency, suitable for various material handling environments. The same type of product has won the national level new product title and the mechanical industry science and technology progress award, leading the export of China's telescopic forklift industry and the domestic high-end market for many consecutive years.



1. 发动机

配置符合中国第四阶段排放标准的柴油发动机，具有高可靠性和燃油经济性，低噪音，低排放，是专门针对工程机械作业工况精心设计制造并经过验证的优质产品。动力系统采用双向减振技术，全方位弹性悬挂，有效克服动力系统与车架之间的共振，降低噪音及动力系统的疲劳破坏。

1.Engine

Equipped with diesel engines that meet US IV emissions, with high reliability and fuel economy, low noise, low emission, it is specially designed and manufactured for the working conditions of construction machinery. The power system adopts two-way vibration reduction technology, all-round elastic suspension, effectively overcome the resonance between the power system and the frame, reduce the noise and the fatigue damage of the power system.

2. 变速箱

采用国产变速箱，性能优越，功能强大，适应叉装机各种工况的使用要求；前2后2档位设置，对于作业情况复杂且需频繁换向行驶的伸缩臂叉装机，可有效提高经济性和发动机的使用寿命；电控换挡，操作轻松简便，有效降低驾驶员操作强度。

2.Gearbox

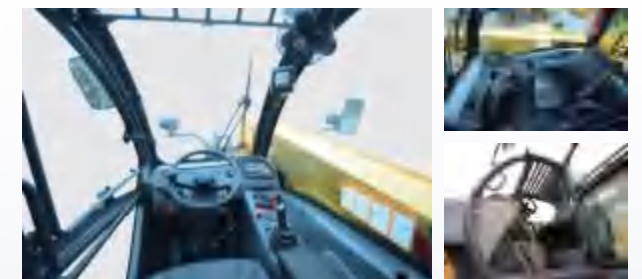
Using domestic gearbox, superior performance, powerful function, fork installed to meet the requirements of various working conditions; front 2 and back 2 gears, for complex operation and frequent switching expansion arm fork installed, can effectively improve the economy and service life of the engine; electronic control shift, easy and simple operation, and effectively reduce the driver operation strength.

3. 驱动桥

采用了中国生产的免维护多片湿式制动桥，具有弹簧制动，液压释放的功能。湿式桥结构简洁紧凑，内部系统不受外界污染，制动片浸润在液压油里散热性好，湿式制动因为全封闭可以实现免维护。

3.Drive Axle

Adopt maintenance-free multi-plate wet brake bridge made in China, with spring brake and hydraulic release function. The structure of the wet bridge is simple and compact, the internal system is free from external pollution, the brake sheet is infiltrated in the hydraulic oil and the heat dissipation is good. The wet brake can be maintenance-free because it is completely closed.



液压系统 Hydraulic System

转向系统采用负荷传感全液压转向系统，优先阀将工作泵提供的液压油分别供给转向系统和工作系统，当主机转向时，泵主要满足转向系统的压力及流量要求，提高了系统安全性。电比例操纵工作液压系统，操纵轻松自如，降低了司机的工作强度。

The vehicle adopts the full hydraulic wet braking system, the hydraulic pipeline is fully closed loop, can avoid the dust pollution in the atmosphere and reduce the reliability of the braking system, the manipulation is light, sensitive, braking force and control force proportional amplification, low pressure alarm, real-time monitoring.

制动系统 Brake system

整车采用全液压湿式制动系统，液压管路是全封闭回路，可以避免大气中的粉尘污染油液而降低制动系统的可靠性，操纵轻便、灵敏，制动力与操纵力成比例放大，低压报警，实时监控。

The whole vehicle adopts a full hydraulic wet brake system. The hydraulic pipeline is a fully closed circuit, which can avoid the dust in the atmosphere polluting the oil and reducing the reliability of the brake system. It is easy and sensitive to operate. The brake force and the control force are scaled up in proportion, low pressure alarm, and real-time monitoring.

力矩限制器系统 Moment Limiter System

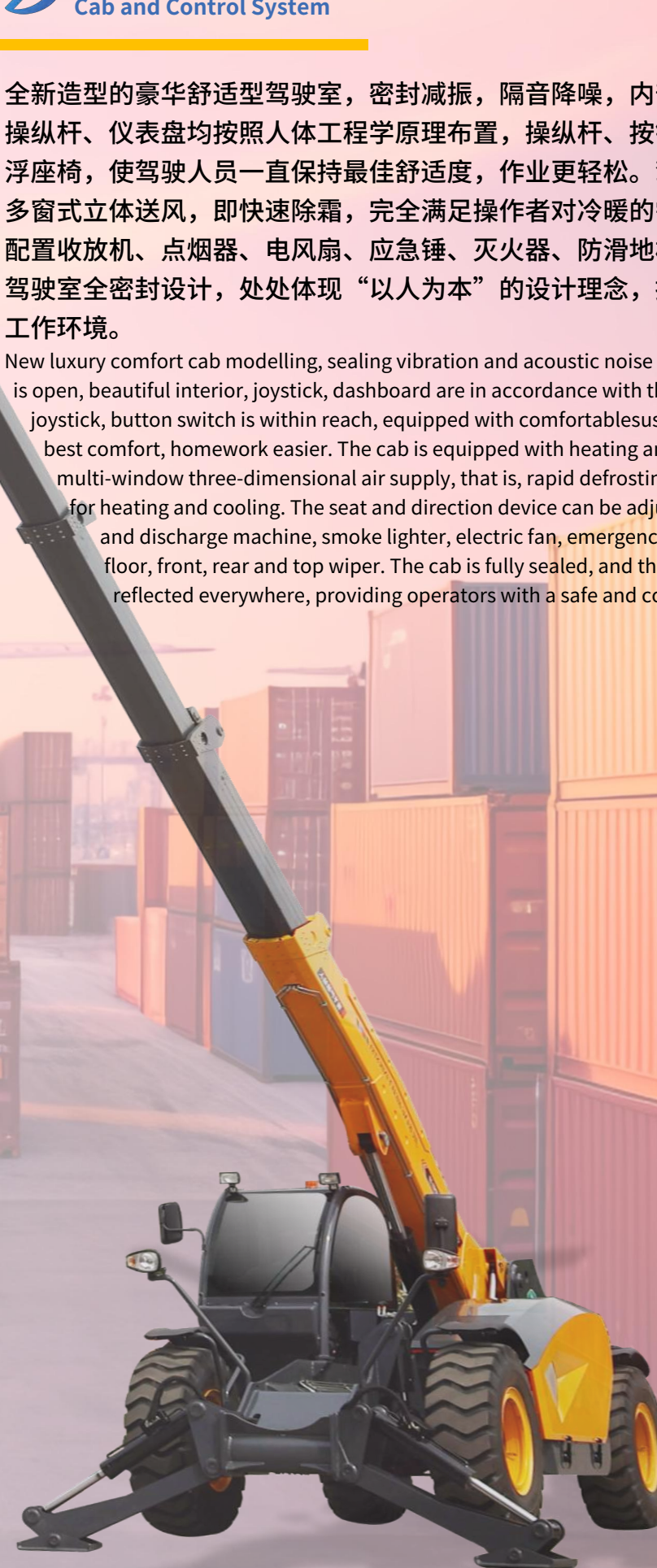
该系统由称重传感器和控制显示器组成，有撑支腿和不撑支腿两种工况。系统通过检测后桥的形变来判断车辆是否超载。当车辆接近满载时，系统会通过红色指示灯提示操作者，当车辆超载时，系统会通过切断相关先导油路来限制大臂的伸出与降落。该系统性能稳定、可靠，可有效防止车辆倾翻。

The system consists of a weighing sensor and a control display, with both leg support and no leg support conditions. The system detects whether the vehicle is overloaded by detecting the deformation of the rear axle. When the vehicle is approaching the full load, the system will prompt the operator through the red indicator light. When the vehicle is overloaded, the system will limit the extension and landing of the large arm by cutting off the relevant pilot oil road. The system performance is stable and reliable, which can effectively prevent the vehicle from tipping over.

驾驶室和操纵系统 Cab and Control System

全新造型的豪华舒适型驾驶室，密封减振，隔音降噪，内部空间大，视野开阔、内饰美观，操纵杆、仪表盘均按照人体工程学原理布置，操纵杆、按钮开关触手可及，配备舒适的悬浮座椅，使驾驶人员一直保持最佳舒适度，作业更轻松。驾驶室室内布置冷暖空调(标配)，多窗式立体送风，即快速除霜，完全满足操作者对冷暖的需要。座椅和方向器随意可调，配置收放机、点烟器、电风扇、应急锤、灭火器、防滑地板、配前、后、顶雨刮器，驾驶室全密封设计，处处体现“以人为本”的设计理念，提供给操作者安全舒适的工作环境。

New luxury comfort cab modelling, sealing vibration and acoustic noise reduction, interior space is big, eye shot is open, beautiful interior, joystick, dashboard are in accordance with the principle of human body engineering, joystick, button switch is within reach, equipped with comfortable suspension seat, keep drivers has been the best comfort, homework easier. The cab is equipped with heating and cooling air conditioning (standard), multi-window three-dimensional air supply, that is, rapid defrosting, fully meet the needs of the operator for heating and cooling. The seat and direction device can be adjusted at will, equipped with the receiving and discharge machine, smoke lighter, electric fan, emergency hammer, fire extinguisher, anti-skid floor, front, rear and top wiper. The cab is fully sealed, and the design concept of "people-oriented" is reflected everywhere, providing operators with a safe and comfortable working environment.



各种油位检查、油液添加及润滑脂加注等保养点均布置在易于接近的部位，空滤器滤芯、电气设备等的检修拆换均可方便进行。采用大侧门、上翻式发动机罩，可使发动机、冷却系统等完全暴露，方便检查添加发动机机油位及更换滤芯，维护保养轻松简便。并联结构集成式保险丝盒，整机电气集中控制，故障排查便利、高效。

Various oil level inspection, oil addition and grease filling and other maintenance points are arranged in easily accessible parts, and the maintenance and disassembly of the air filter element and electrical equipment can be convenient. The use of large side door, top-turn engine hood, can make the engine and cooling system completely exposed, convenient to check and add the engine oil level and replace the filter element, maintenance is easy and simple. Parallel structure integrated fuse box, the whole machine electrical centralized control, troubleshooting is convenient and efficient.



工作装置采用四节伸缩臂结构，包括伸缩缸，变幅油缸，辅助调平油缸等，通过工作装置液压系统来控制伸缩臂的变幅及伸缩，臂架结构经过有限元分析优化，减少应力集中，工作安全可靠，能满足各类恶劣工况。

伸缩臂前端配有货叉，设有双侧液压油缸补偿自动调平系统，在伸缩臂变幅过程中，能够自动控制货叉与地面始终保持同一角度，保证高位叉举的稳定和安全。

The working device adopts four telescopic boom structure, including telescopic cylinder, amplitude variable oil cylinder, auxiliary leveling oil cylinder, etc., through the working device hydraulic system to control the amplitude and expansion of the telescopic boom, the boom structure is optimized by finite element analysis to reduce stress concentration, safe and reliable work, and can meet all kinds of bad working conditions.

The front end of the telescopic boom is equipped with a fork, and a bilateral hydraulic cylinder compensation automatic leveling system, which can automatically control the fork and the ground always keep the same Angle in the process of the telescopic boom amplitude, to ensure the stability and safety of the high fork lift.

各车架具备横向调平功能(车身可左右摆动10°)，保证工地不平整时，车架始终保持水平，且车架前侧配置了支撑支腿，保证了高位叉举的稳定和安全，提高了整机作业范围及整机稳定性。采用整体式车架，发动机、驾驶室分居在车架两侧，伸缩臂布置在中间位置，布置合理，结构简明，减少了压型和不规则焊缝，强化了重要承力部位，各关键铰点处均采用了坚实的安装座，能承受各种工况下的扭力及冲击载荷。为安全作业提供有效保障。

The frame has the horizontal leveling function (the body can swing from left to right 10), to ensure that the site is not smooth, the frame is always horizontal, and the front side of the frame is equipped with support legs, to ensure the stability and safety of the high fork, improve the operation range and the stability of the whole machine. Using integral frame, engine, cab separated on both sides of the frame, telescopic arm layout in the middle position, reasonable layout, concise structure, reduce the pressure and irregular weld, strengthen the important bearing parts, the key hinge point adopts the solid installation, can withstand various conditions of torque and impact load. To provide an effective guarantee for the safe operation.



伸缩臂叉车可选配铲斗、作业平台、包夹等不同作业机具，满足不同的作业需求。

Telehandler can be equipped with bucket, work platform, bag clamp and other different work tools to meet different work needs.

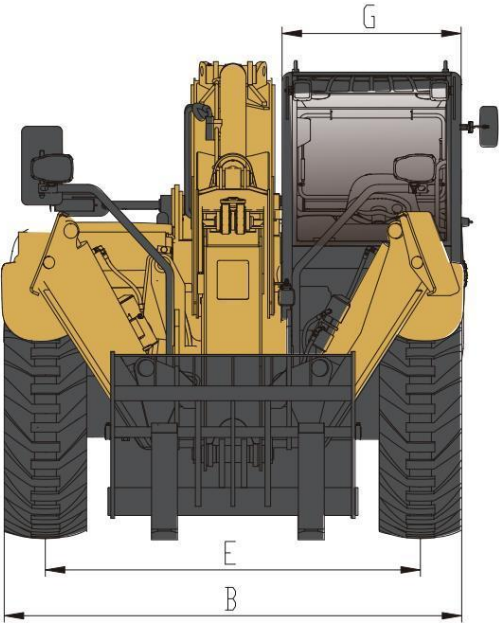
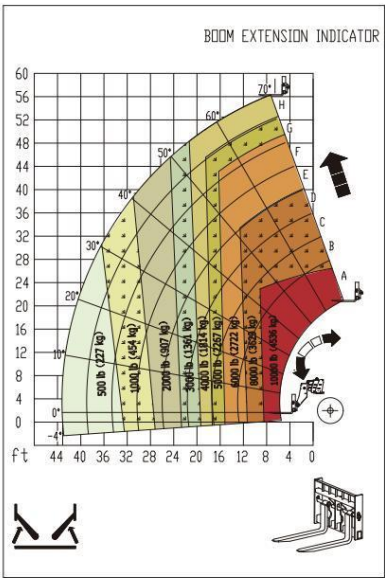
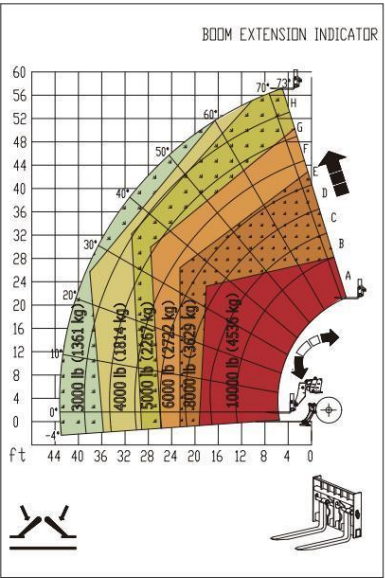
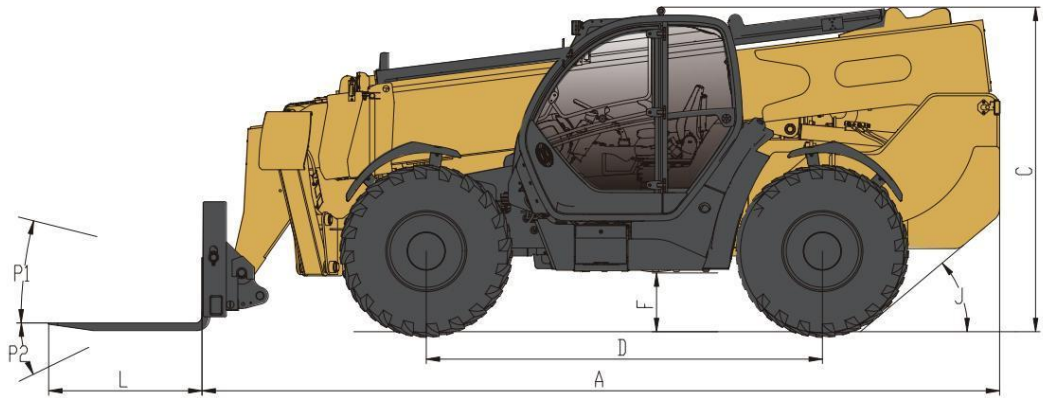
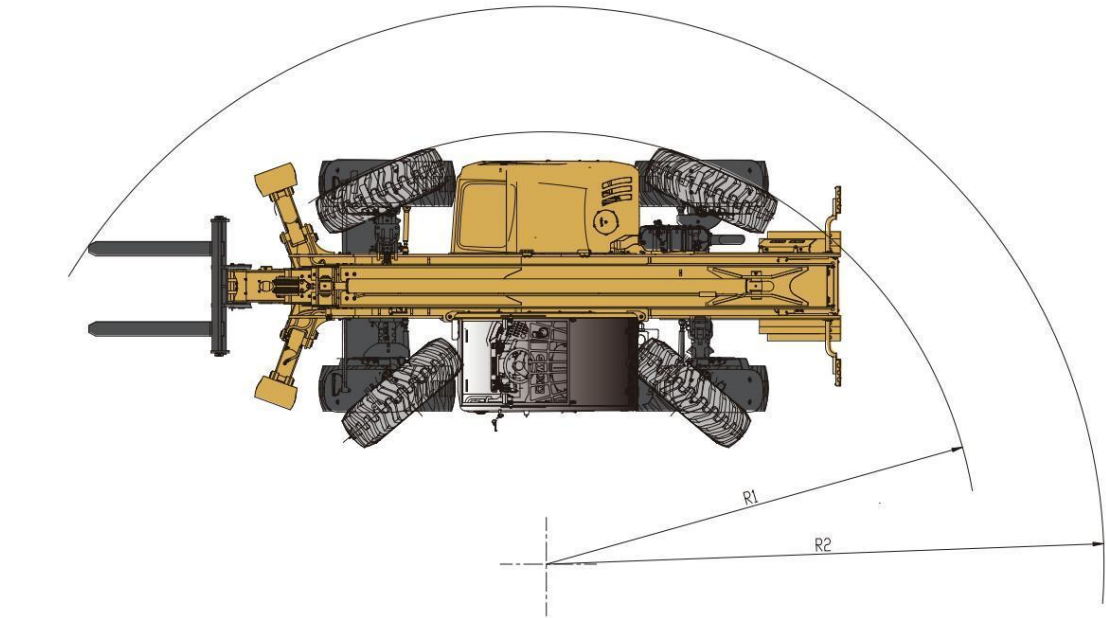


①	②	③
④	⑤	
⑥	⑦	

- ① 夹管钳 (Pipe clamp)
- ② 高空平台 (platform)
- ③ 螺旋钻 (Auger)
- ④ 包夹 (Bag clamp)
- ⑤ 旋转侧移叉夹 (Rotate the sideshift fork clamp)
- ⑥ 铲斗 (Bucket)
- ⑦ 吊钩 (Hook)

主要技术参数		Main technical parameters
型号	model	CZ45-18
整机重量	Whole machine weight	14500kg
整机尺寸宽度	Overall dimensions and width	2490mm
整机尺寸高度	Overall dimensions and height	2700mm
整机尺寸长度	Overall dimensions and length	6950mm
整机尺寸长度	Overall dimensions and length	3900mm
离地间隙	Ground clearance	450mm
车架调平范围	Frame leveling range	±10°
最大起重量	Maximum lifting capacity	4500kg
最大起升高度	Maximum lifting height	17.9m
外伸距	outreach	13.2m
最大高度吊重量	Maximum lifting capacity at height	1100kg
最大幅度吊重量	Maximum lifting capacity	900kg
最大行驶速度	Maximum driving speed	34km/h
爬坡能力(重载)	Climbing ability (heavy load)	50°
转弯半径(外轮)	Turning radius (outer wheel)	5.2m

性能参数		performance parameter	
挡位	Gear position	两档（高低速）	Two gears (high and low speed)
传动方式	Transmission mode	静液压驱动	Hydrostatic Drive
驱动桥	Drive axle	湿式制动	Wet braking
转向模式	Steering mode	前桥/蟹行/四轮模式	Front axle/crab ride/four-wheel
液压系统	Hydraulic system	力士乐	Rexroth
轮胎规格	Tire specifications	17.5	seventeen point five
燃油种类	Fuel type	柴油	diesel oil
柴油油箱容量	Diesel fuel tank capacity	210L	
液压油箱容量	Hydraulic oil tank capacity	230L	
发动机功率/转速	Engine power/speed	97KW/2200	
发动机品牌/排放	Engine brand/emissions	康明斯/国三	Cummins/National III
控制方式	Control method	比例控制	Proportional control



随技术进步，产品结构、参数等不断改进，恕不另行通知。样本信息与实物不符的以实物为准
With the advancement of technology, product structure, parameters, etc. are constantly improving without further notice. If the sample information does not match the actual product, the actual product shall prevail